

HUDSON RIVER PARK AREA IMPACTS—FREQUENTLY ASKED QUESTIONS

OVERVIEW FOR BICYCLISTS AND PEDESTRIANS UTILIZING BIKEWAY/WALKWAY BETWEEN WEST 29th AND WEST 30th STREETS

Stage 1: Standard Bikeway/Walkway Configuration

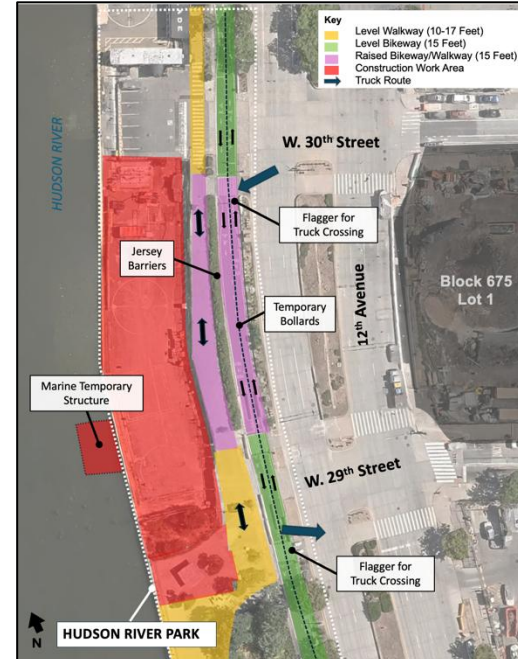
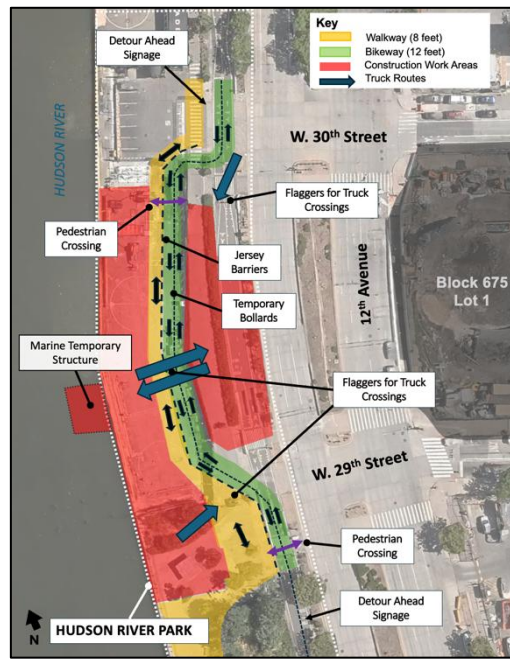
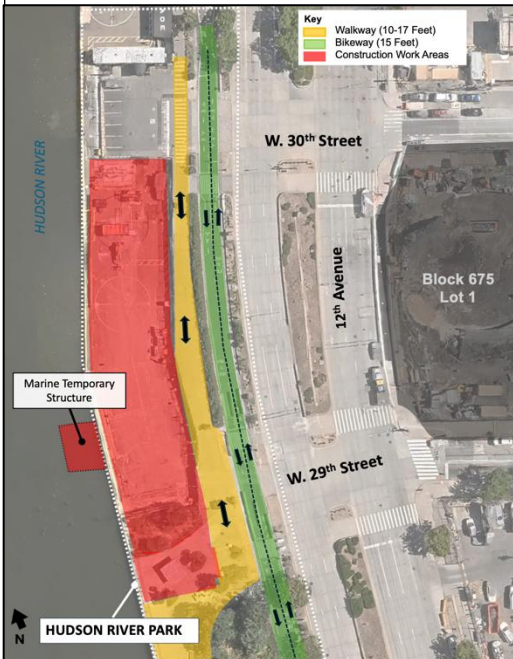
September 2025 – June 2026

Stage 2: Temporary Bikeway/Walkway Shift

June 2026 – Q4 2026*

Stage 3: Temporary Raised Bikeway/Walkway

Q4 2026* – Q3 2028*



*all timelines are approximate and subject to change

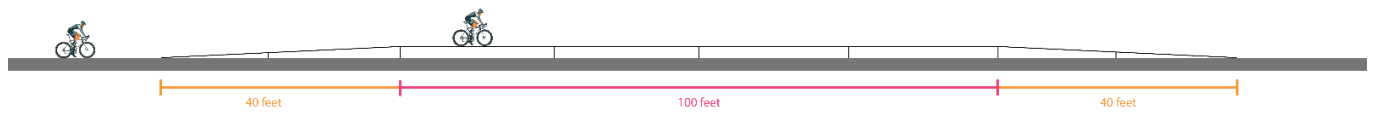
Q: How will bicyclists and pedestrians in Hudson River Park be impacted by Hudson Tunnel Project construction?

A: Starting in 2026 and continuing through 2028, Gateway Development Commission's (GDC) contractor will temporarily modify the configuration of the New York State Department of Transportation bikeway and Hudson River Park walkway between W. 29th and W. 30th Streets, as pictured above. These temporary modifications are necessary to accommodate critical Hudson Tunnel Project construction work within and near the existing bikeway and walkway.

Q: When can bicyclists and pedestrians expect to first see changes and how long will changes be in place?

A: As of June 2026, an alternative configuration is in place to ensure safe travel for pedestrians and bicyclists while construction activities take place. The bikeway and walkway between W. 29th and W. 30th Streets is temporarily detoured west, with the bikeway temporarily narrowed to 12 feet and the walkway temporarily narrowed to 8 feet.

Around Q4 2026 through Q3 2028 (Stage 3), the bikeway and walkway will return to their original alignments and widths (15 feet for bikes and approximately 12 feet for pedestrians). The most significant temporary change during this stage will be the construction of a 100-foot-long elevated section of path between W. 29th and W. 30th Streets. Cyclists and pedestrians will access this elevated area using 40-foot ADA-compliant ramps (see below).

Illustrative Image of Stage 3: Temporary Raised Bikeway/Walkway**Q: Will there be increased trucking in Hudson River Park during construction?**

A: GDC's contractor expects at most 15 pickup trucks and small commercial vehicles per day to cross the bikeway and walkway. Tractor-trailer trucks will very rarely need to enter this construction site. Additionally, during Stage 2, minimal vehicle traffic will cross the bikeway/walkway at the midblock entry/exit each day.

To ensure safety of all park users, we will station flaggers at all points where trucks will cross the bikeway and pedestrian walkway.

Q: What safety measures will be put in place to protect bicyclists and pedestrians during construction?

A: GDC is committed to keeping all those who enjoy Hudson River Park and the surrounding area safe – bicyclists, pedestrians, tourists, and construction crews on site. GDC and its contractor will be implementing the following measures to protect bicyclists and pedestrians traveling through Hudson River Park and the surrounding area during construction:

- *Station flaggers at all truck crossings*
- *Separate paths of travel from construction areas with jersey barriers and fencing*
- *Separate opposing directions of bike travel with flexible bollards*
- *Install signage to denote detours and truck crossings*
- *Install lighting along altered paths*
- *Install speed calming devices on bikeway*

Q: Who can park users reach out to with questions, suggestions, or concerns?

A: GDC is committed to a comprehensive, proactive, and responsive community engagement program. Park users can reach out to GDC with questions or concerns via the following methods:

- *Visit the [Hudson Tunnel Project Community Engagement Center](#) at 249 9th Avenue*
- *Submit an inquiry via the contact form at the bottom of GDC's [Community Engagement](#) web page*
- *Call GDC's 24/7 hotline at 1-800-239-9497*
- *Email GDC at ManhattanConstruction@gatewayprogram.org*

PROJECT OVERVIEW**Q: What is the Hudson Tunnel Project and why is it necessary?**

A: The Hudson Tunnel Project (HTP) is an urgent investment in the nation's passenger rail infrastructure that will improve train transportation up and down the East Coast by building nine miles of new passenger rail track between New York and New Jersey, including a new, two-tube tunnel under the Hudson River, and rehabilitating the 116-year-old North River Tunnel, which is a leading cause of delays that impact hundreds of thousands of riders.

When the HTP is finished there will be two tunnels, containing four modern tracks, where there are currently only two tracks. This will make traveling by train more reliable and reduce congestion on already overcrowded roads by making

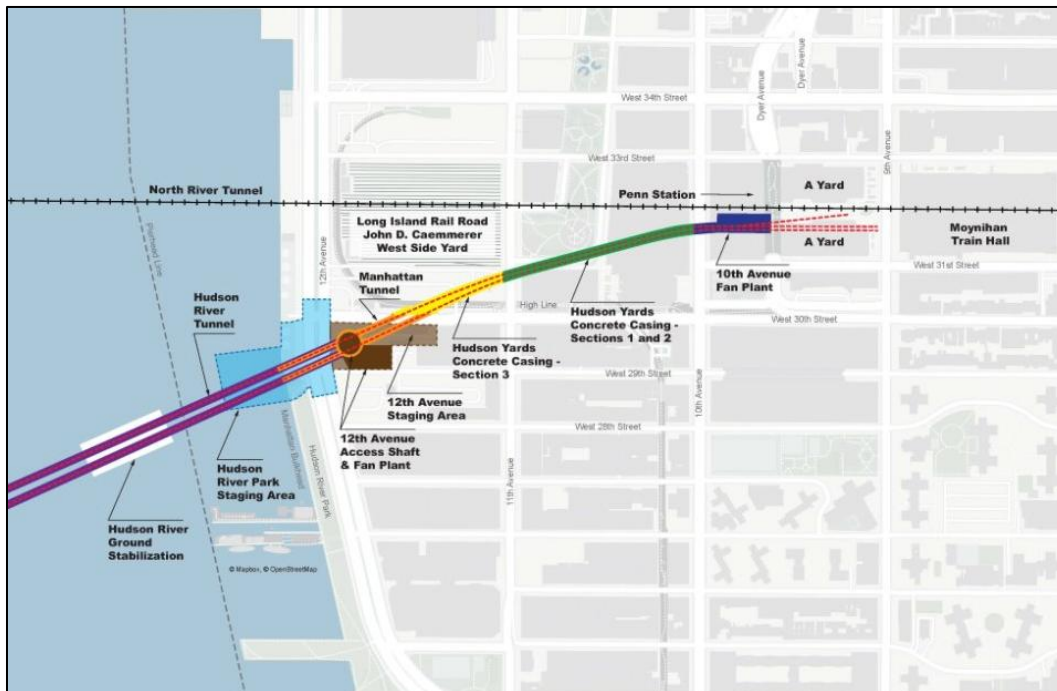
train use more attractive. Just as important, it will prevent a tunnel shutdown that could cost our national economy \$16 billion.

Construction of the HTP is already creating tens of thousands of good jobs and generating billions in economic activity. Reliable, modern rail transit will support long-term growth that benefits the region and the country for decades after the project is finished.

Q: Why is HTP construction taking place in Hudson River Park?

A: The new Hudson River Tunnel will pass beneath the Hudson River, Hudson River Park, and 12th Avenue on its way to connect into New York Penn Station. Before tunneling can take place, the ground underneath 12th Avenue and Hudson River Park must be hardened to ensure safe operation through the future tunnel.

The Hudson River Park bikeway and walkway will be modified to facilitate ground stabilization activities in this area, laying crucial groundwork for this long-term investment in sustainable public transportation. GDC appreciates your understanding and patience as we complete this once-in-a-century infrastructure project.



Hudson Tunnel Project Construction in Manhattan