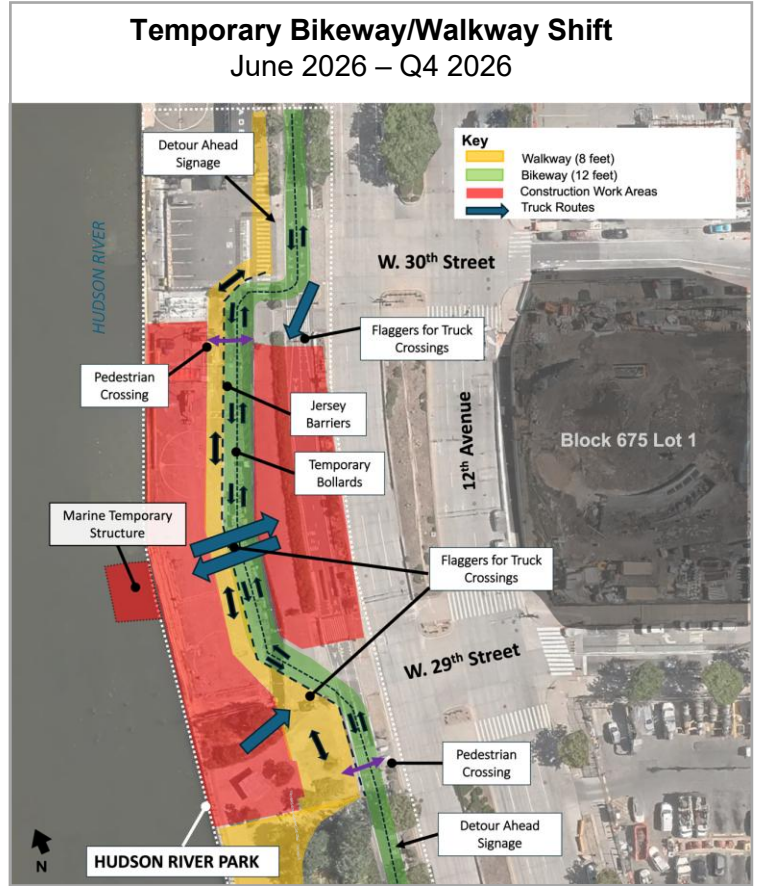
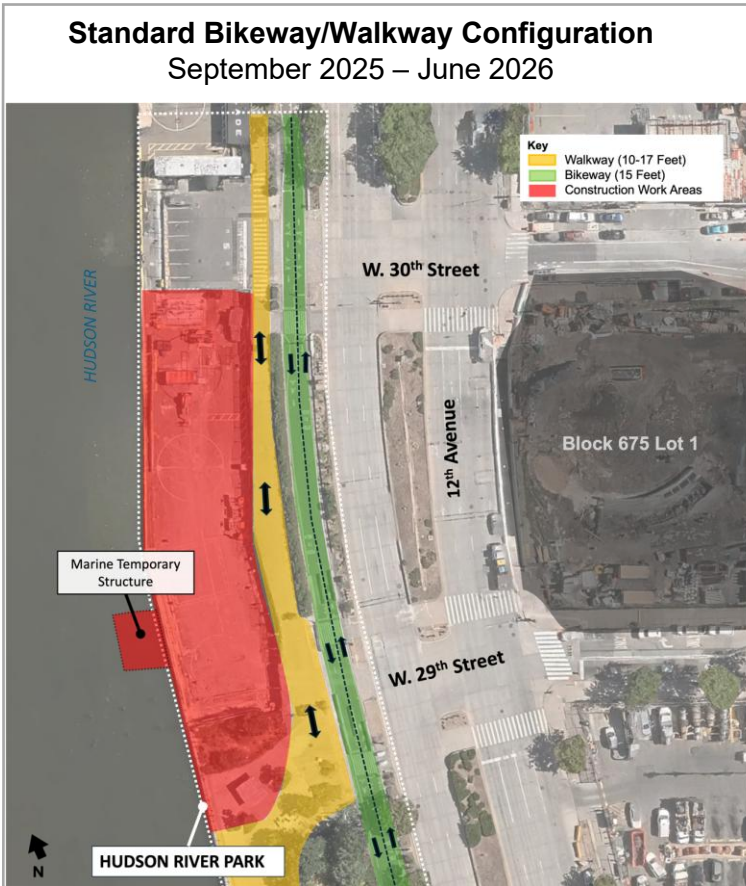


CONSTRUCTION NOTICE

WHAT: Bikeway and Walkway Temporary Shift

WHERE: In and near Hudson River Park between W. 29th Street and W. 30th Street

WHEN: **UPDATED** June 2026 – Q4 2026

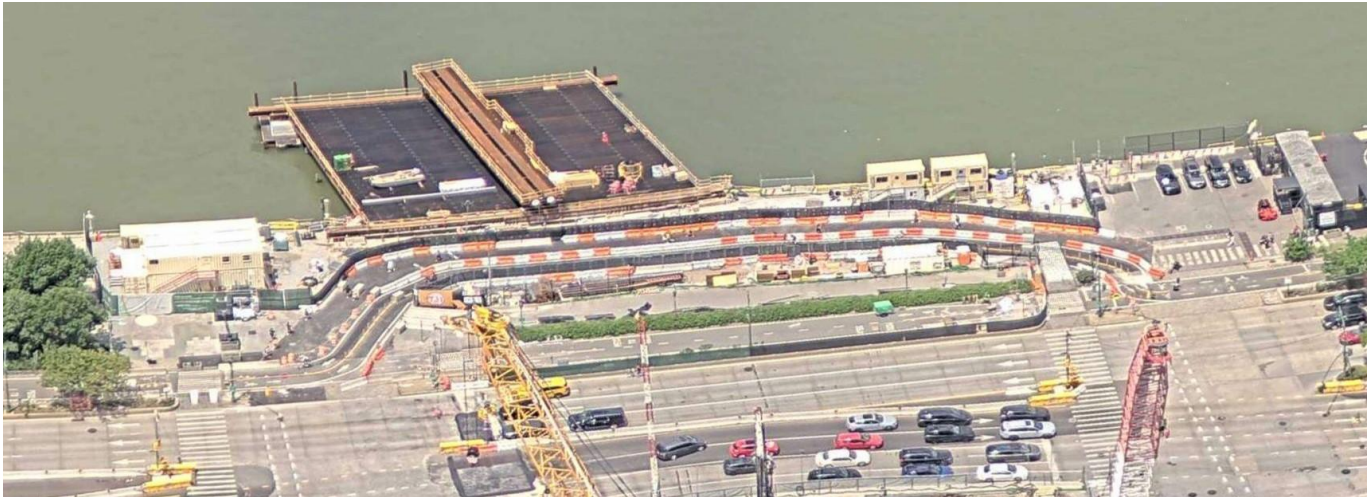


In June 2026, GDC’s contractor implemented a shift to the New York State Department of Transportation bikeway and Hudson River Park walkway west between W. 29th Street and W. 30th Street. For approximately 6 months, the bikeway will be narrowed from its existing width of 15 feet to 12 feet, and the walkway will be narrowed from its existing width, which ranges from 10 to 17 feet, to 8 feet.

Construction trucks enter and exit the work site at 12th Avenue and W. 30th Street and at 12th Avenue and W. 29th Street. There is also minimal truck crossing at the midblock area; all truck route movements are shown in blue on the map above.

Additional information on next page





Aerial view of implemented bikeway and walkway temporary shift, June 2026

Park users are protected by 8-foot barriers around construction work areas and by bollards/jersey barriers separating uses and directions of travel. Detour signage has been installed north and south of the shift.

For frequently asked questions about cyclist and pedestrian use of Hudson River Park and the surrounding area during construction, see [Hudson River Park Area Impacts—FAQs](#). For additional information on altered pedestrian paths of travel near Hudson River Park, see [Long-Term Crosswalk Closure](#).

Temporary bikeway and walkway shifts are accommodating crucial ground stabilization in the future tunnel's path. Gateway Development Commission appreciates park users' understanding and patience throughout the duration of this modification.

Questions or Concerns?

24/7 Hotline: 800-239-9497

Email: ManhattanConstruction@gatewayprogram.org

Inquiry Form: www.gatewayprogram.org/community-engagement.html

Hudson Tunnel Project Overview: www.gatewayprogram.org

