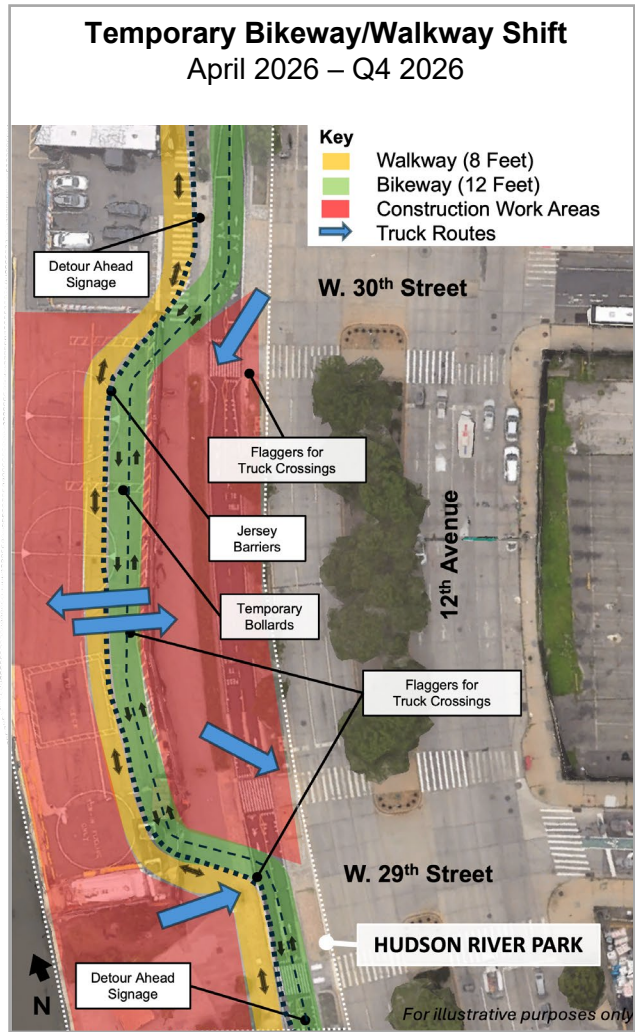


CONSTRUCTION NOTICE

WHAT: Bikeway and Walkway Temporary Shift
WHERE: In and near Hudson River Park between W. 29th Street and W. 30th Street
WHEN: As early as April 20, 2026 – Q4 2026



In April 2026, GDC’s contractor will shift the New York State Department of Transportation bikeway and Hudson River Park walkway west between W. 29th Street and W. 30th Street for approximately six months. During this time, the bikeway will be narrowed from its existing width of 15 feet to 12 feet, and the walkway will be narrowed from its existing width, which ranges from 10 to 17 feet, to 8 feet.

Construction trucks will enter the work site at 12th Avenue and W. 30th Street and exit at 12th Avenue and W. 29th Street. There may also be minimal truck crossing at the midblock area; all truck route movements are shown in blue on the map above.



Park users will be protected by 8-foot barriers around construction work areas and by bollards/jersey barriers separating uses and directions of travel. Detour signage will be installed north and south of the shift.

For frequently asked questions about cyclist and pedestrian use of Hudson River Park and the surrounding area during construction, see [Hudson River Park Area Impacts—FAQs](#). For additional information on altered pedestrian paths of travel near Hudson River Park, see [Long-Term Crosswalk Closure](#).

Temporary bikeway and walkway shifts will accommodate crucial ground stabilization in the future tunnel's path. Gateway Development Commission appreciates park users' understanding and patience throughout the duration of this modification.

Questions or Concerns?

24/7 Hotline: 800-239-9497

Email: ManhattanConstruction@gatewayprogram.org

Project Overview: www.gatewayprogram.org

