

The Hudson Tunnel Project

December 2025

The Gateway Development Commission (GDC) is the bi-state public authority charged with delivering the Hudson Tunnel Project (HTP), an urgent investment in the nation's passenger rail infrastructure that will improve transportation up and down the East Coast, create tens of thousands of jobs, and strengthen the national economy for decades to come.

The HTP will make two crucial improvements to the national rail network:

1. Building nine miles of new passenger rail track between New York and New Jersey, including a new, two-tube tunnel under the Hudson River.
2. Rehabilitating the North River Tunnel, which has been in service since 1910 and is a source of chronic delays for hundreds of thousands of daily passengers.

The HTP consists of ten distinct construction projects. The total budget for construction is \$16 billion.

Creating Jobs and Growing the Economy

Total Economic Impact of Construction



95,000
Jobs



\$19.6 Billion
in Economic Output

HUDSON TUNNEL PROJECT MAP



Key Dates:

2035 New tunnel completed

2038 Rehab of North River Tunnel completed

The Most Urgent Infrastructure Project in the Nation



The Northeast Corridor (NEC) is the most heavily used passenger rail line in the United States and an economic engine for the entire country. The corridor stretches from Washington, D.C., to Boston, moving a region that generates 20% of the nation's GDP.

The ten-mile stretch between Newark, New Jersey, and New York Penn Station is the busiest, most congested section of the corridor. 450 trains, carrying roughly 200,000 riders, travel between the two states every day.

Amtrak and NJ TRANSIT service through this critical section of the NEC relies on the North River Tunnel, which has been in service since 1910. This tunnel contains just two tubes, one carrying trains into New York and one taking them into New Jersey. Any disruption in one tube impacts travel in both directions.

Today, the aging tunnel is a leading cause of delays for riders. Any further reductions in service through the tunnel would have massive negative impacts on the region and the national economy.

Negative Impacts of a Tunnel Shutdown

Shutting down the North River Tunnel for repairs without a replacement already built would have massive, widespread negative impacts that would hurt Americans from coast to coast.

Closing one tube in the existing tunnel without a replacement would reduce capacity by 75%, from 24 trains per hour to only six, and cut service between New York and Washington, D.C., in half.

This would cost the national economy \$16 billion over four years. With fewer trains, more people will choose to drive, increasing commute times for drivers and delaying emergency response.

Current Conditions in the North River Tunnel

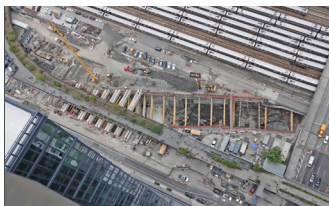


Advancing Construction on Both Sides of the Hudson River

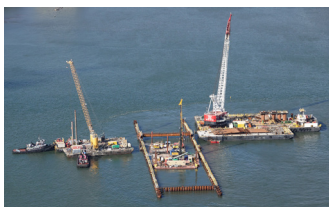
Five of the ten construction projects that make up the HTP are in progress, supporting tens of thousands of good-paying jobs and generating billions of dollars in economic activity.



The Tonnelle Avenue Project is building a new roadway bridge to create the access point for the first two tunnel boring machines and enable trains to pass into and out of the new tunnel without disrupting traffic on the highway once construction is complete.



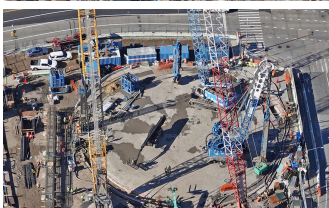
The Hudson Yards Concrete Casing – Section 3 Project is building the final section of the rail right-of-way beneath Hudson Yards, which will connect the new tunnel into New York Penn Station. Sections 1 and 2 have already been built.



The Hudson River Ground Stabilization Project is stabilizing the riverbed on the Manhattan side of the Hudson River to enable the tunnel boring machines to excavate the new tunnel.



The Palisades Tunnel Project is constructing the first mile of the new tunnel tubes on the New Jersey side of the Hudson River. This is the first project that involves tunnel boring.



The Manhattan Tunnel Project is building the section of the new tunnel under West 30th Street and creating a controlled pathway for the tunnel boring machines under 12th Avenue.

Economic Impacts of Active Construction Projects



20,200

Jobs



\$1.7 Billion

in Labor Income



\$4.5 Billion

in Economic Output