

CONSTRUCTION NOTICE

WHAT: Preliminary Work—Hudson County Shaft

WHERE: Hudson County Construction Staging Site

WHEN: July 21, 2025 – August 19, 2025
7:00 AM to 11:00 PM (Weekdays)

Preliminary work is underway to advance the Hudson County Shaft, a critical component of the Palisades Tunnel Project. This circular access shaft, measuring approximately 130 feet wide and 120 feet deep, will serve as the means by which the Tunnel Boring Machines (TBMs) will be retrieved after tunneling under the Palisades.

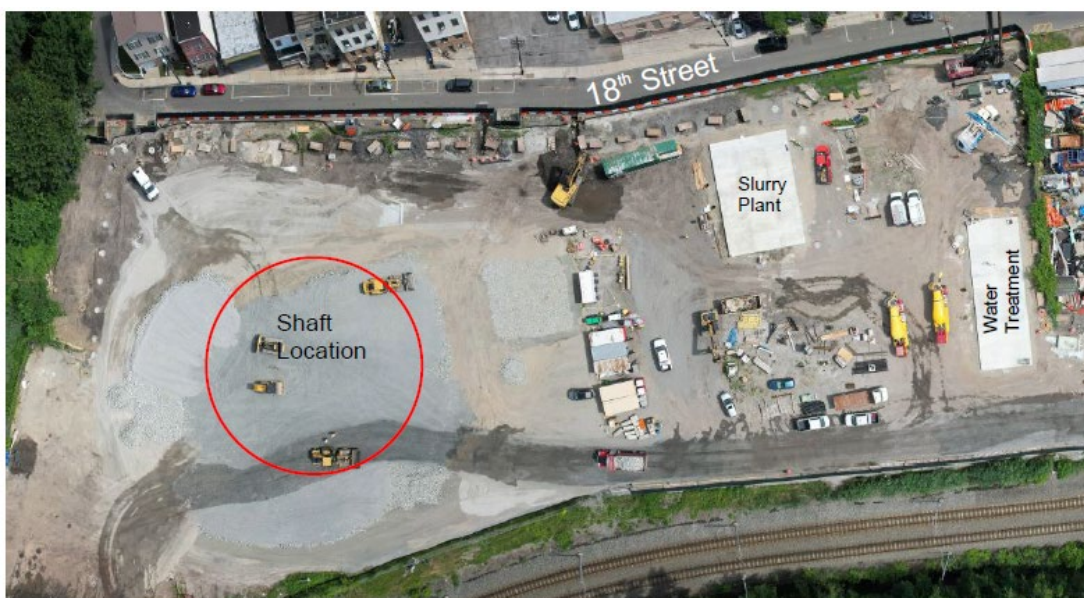
How Will the Shaft Be Constructed?

Construction begins with the installation of a slurry ring wall, which forms the structural perimeter of the shaft. Slurry walls are vertical concrete panels that allow for safe excavation within their enclosed area. These walls are built in segments, using specialized equipment and materials to maintain stability throughout the process.

What Residents Are Seeing On-Site

Several activities are underway to support the upcoming slurry wall installation. These include the establishment of:

- A slurry plant, which produces and processes the specialized slurry mix;
- A water treatment system to manage fluids used during excavation;
- Working platforms to support heavy equipment and access needs; and
- Guidewalls or shallow, reinforced concrete structures built at ground level that help guide excavation equipment to ensure accurate vertical and horizontal alignment of the slurry wall panels.



(over)

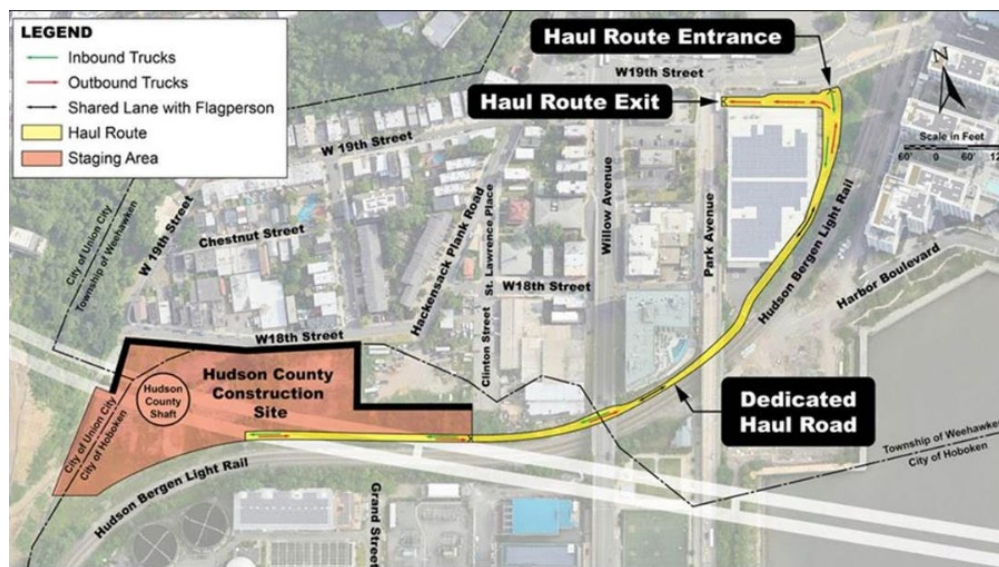
(continued)

Construction Sequence

- Installation of guidewalls and slurry wall panels
- Excavation of the interior of the shaft
- Completion of the Palisades tunnel using two TBMs
- Removal of the TBMs through the shaft

Excavated rock and soil will be removed using a combination of cranes and muck bins. Trucks will access the site via the designated Haul Road, and truck frequency will vary depending on the specific phase of work. All truck activity will be managed to reduce community impact.

All work will take place inside the fenced construction area, and trucks will only access the site from the Haul Road, away from the Shades neighborhood. There will be no construction access from W. 18th Street. Work is not expected to cause any impact to local traffic or parking. No noise impacts are expected during this work. The contractor will monitor conditions throughout the activity to ensure all work stays within approved noise levels.



Questions or Concerns?

24/7 Hotline: 1-800-444-1050

Email: PalisadesTunnel@gatewayprogram.org

General Project Overview – The Palisades Tunnel Project will use tunnel boring machines (TBMs) to excavate two parallel tunnels—measuring approximately 5,100 feet long with an inside diameter of 25 feet—through the rock formations of the Palisades. The project also involves building the new Hudson County Shaft, which will be used to remove the TBMs when digging is complete. The project contractor is Schiavone Dragados Lane Joint Venture (SLDJV).

www.gatewayprogram.org

