

CONSTRUCTION NOTICE

WHAT: Temporary lane closures, curbside parking removal, and sidewalk closure

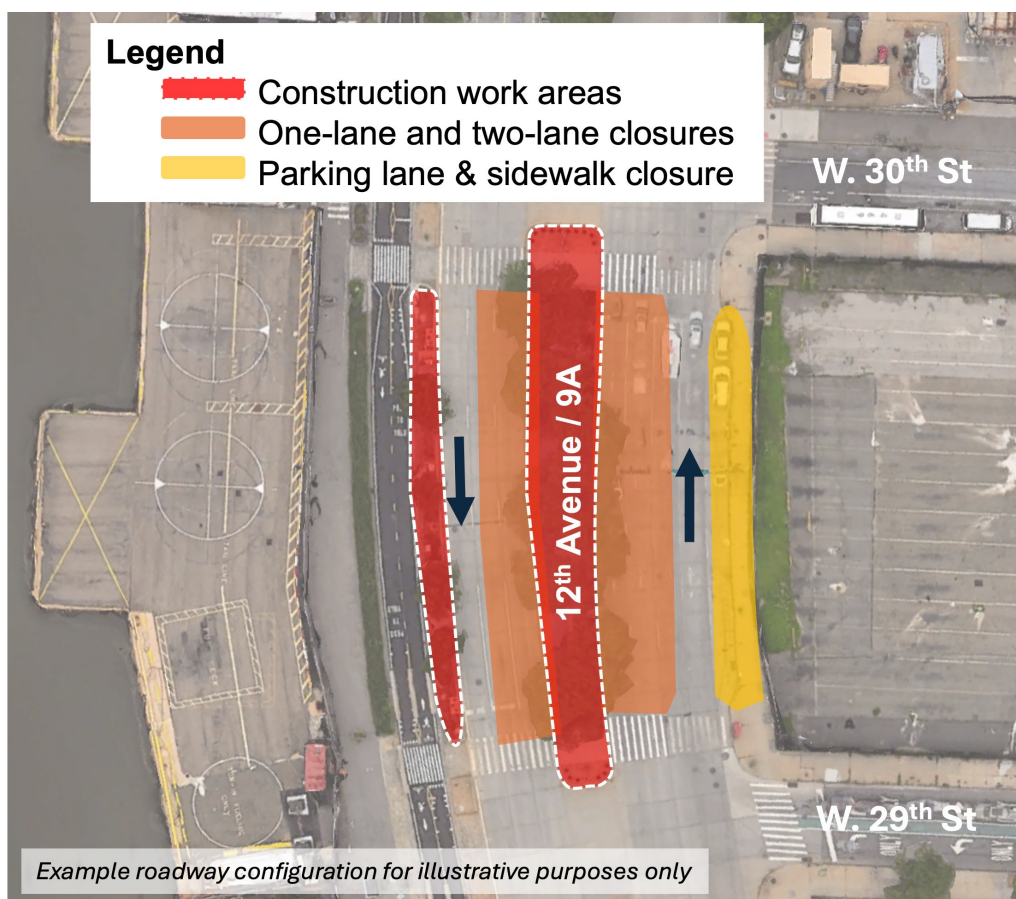
WHERE: 12th Avenue between W. 29th and W. 30th Streets

WHEN: Beginning as soon as May 29, 2025, through August 2025

Weekday Closures: Approximately 9:00 PM to 6:00 AM

Weekend Closures: Approximately 9:00 PM to 10:00 AM

GDC's contractor will use one-lane and two-lane closures on 12th Avenue northbound and southbound lanes to perform construction on the center median. Travel lanes in each direction will be maintained at all times. Signage will be in place to direct motorists through the construction work areas. These closures are necessary to complete tree removals, curb demolition, utility relocations, temporary signal installations, and roadway paving on 12th Avenue. Curbside parking and the sidewalk will be closed on the east side of 12th Avenue. Pedestrians will be detoured to the west side of 12th Avenue.



Questions or Concerns?

24/7 Hotline: 800-239-9497

Email: ManhattanConstruction@gatewayprogram.org

Project Overview: www.gatewayprogram.org

