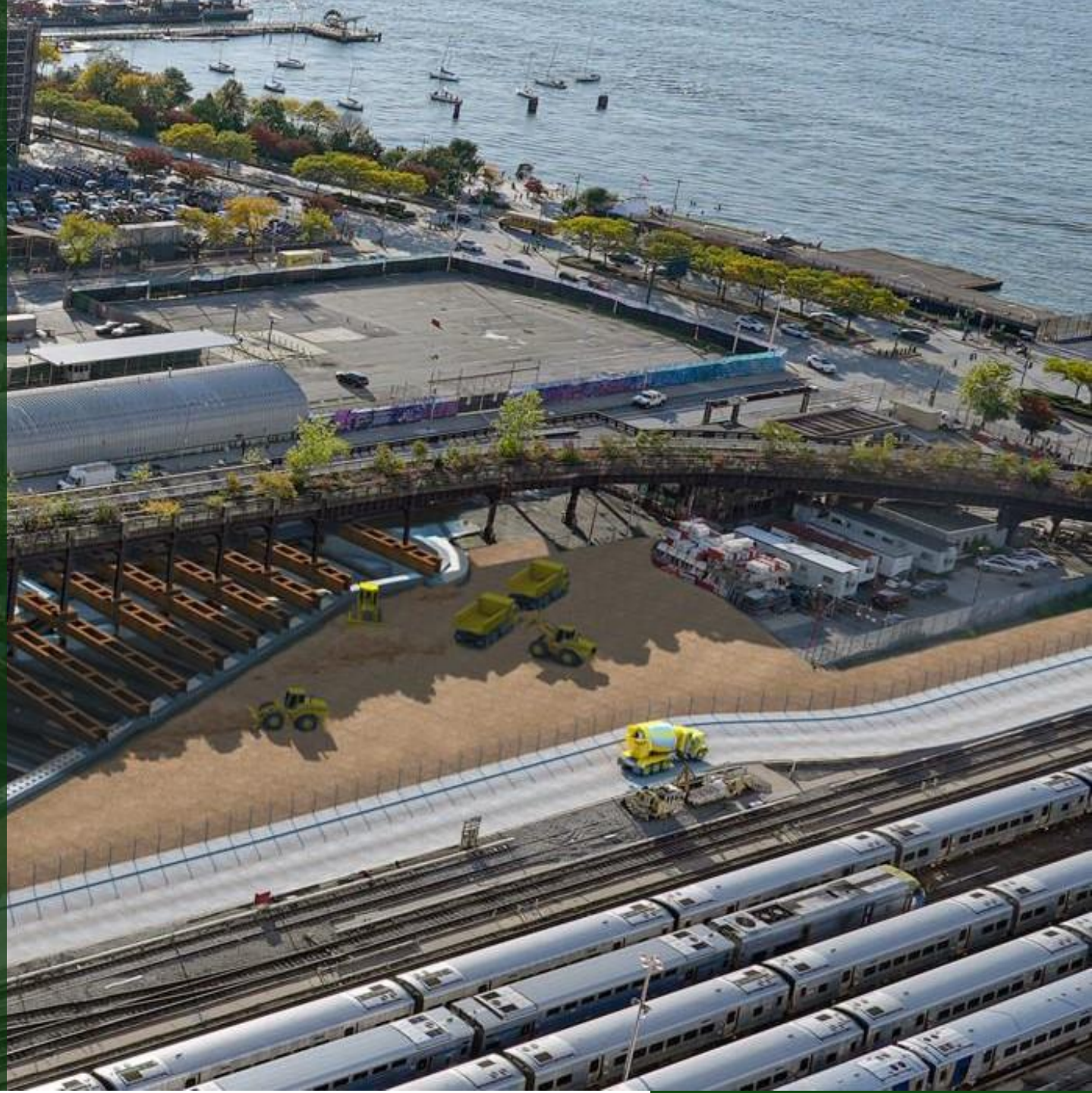


Gateway Development Commission

P3: New Jersey Surface Alignment
Information Session

December 2, 2024



Disclaimer

All information and materials given and discussed at the Information Session are for informational purposes only and NOT to be used for proposing.

This information session will only be discussing the New Jersey Surface Alignment RFQ (Package 3), other active procurements will not be discussed.

Agenda

Introductions

Project Overview

Procurement Process

Diversity, Equity & Inclusion

Q&A



Project Overview

Jim Morrison, Senior Technical Advisor

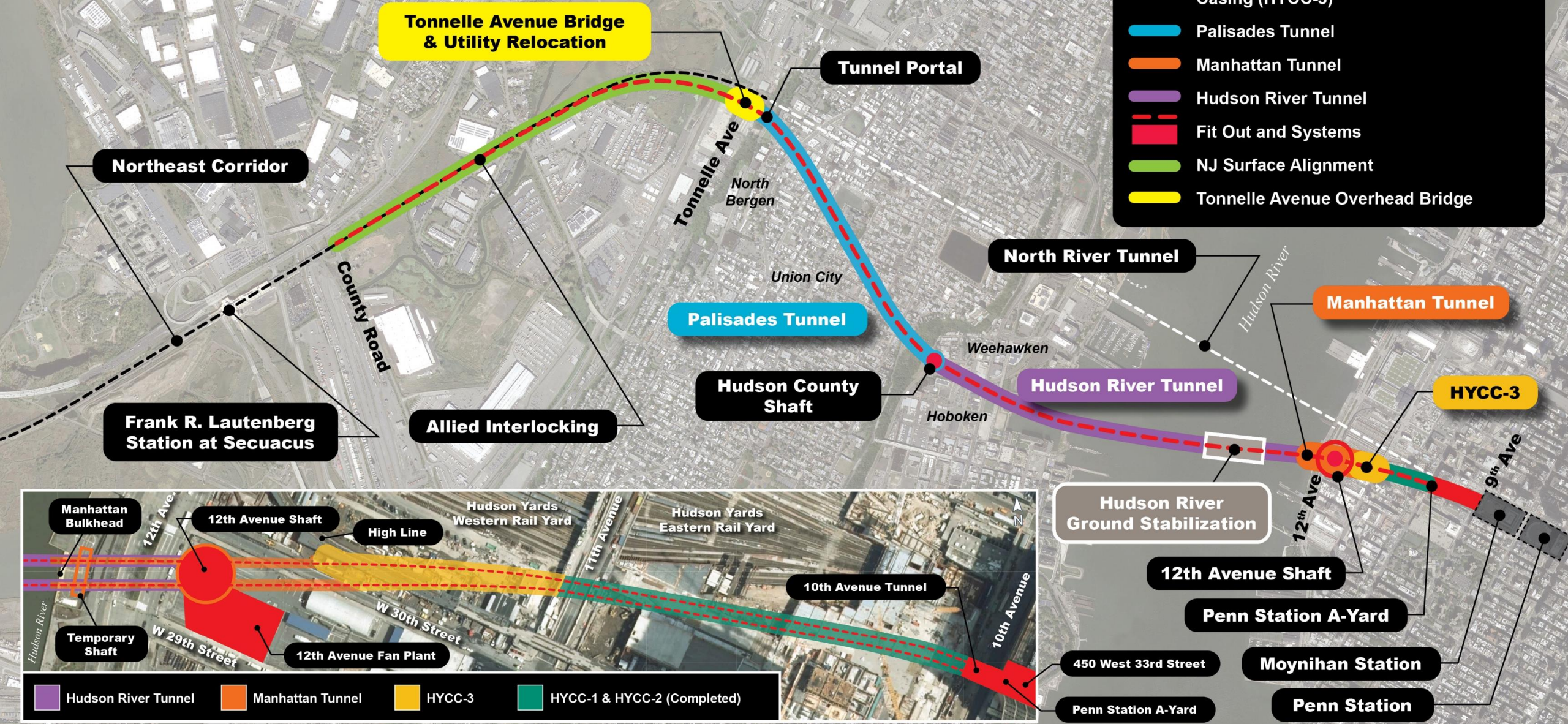
Kiran Patel, Deputy Chief Technical Officer



Hudson Tunnel Project

Contract Packaging Overview Map

- Hudson River Ground Stabilization
- HYCC-1 & HYCC-2 (Completed)
- Hudson Yards Concrete Casing (HYCC-3)
- Palisades Tunnel
- Manhattan Tunnel
- Hudson River Tunnel
- Fit Out and Systems
- NJ Surface Alignment
- Tonnelle Avenue Overhead Bridge



P3 New Jersey Surface Alignment



Scope of Work

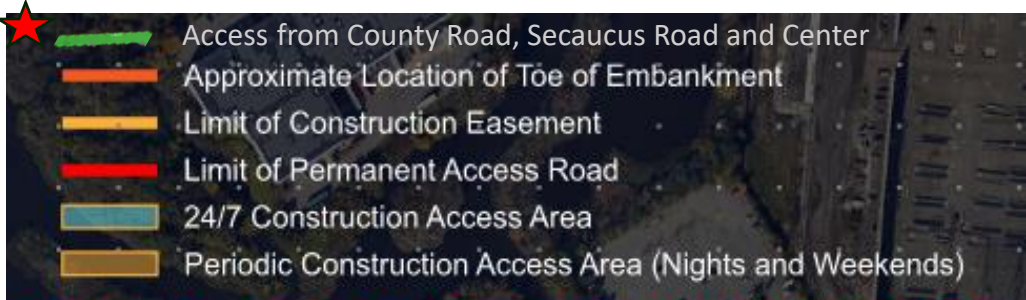
- Construct new trackway adjacent to NEC
 - Approximately **7,540 feet** from County Road (Secaucus) to Tonnelle Avenue (North Bergen)
- Retaining wall with fill
- Bridge over Secaucus Road
- Viaduct over wetlands
- Bridges over NYS&W and Conrail Tracks
- Temporary and permanent access roads, culvert extensions, weir, equipment platforms, and stairs
- Utility relocations and auxiliary signal power substation relocation
- Instrumentation and monitoring program
- Design-Build – Opportunity to innovate
- All information and images presented are subject to change

PLEASE NOTE: Package 3 does not include any new railroad systems (i.e., track, signals, OCS, comm, etc.)

Existing Site Conditions

- Close proximity to existing NEC and adjacent warehouse properties
- Limited access points and staging areas
- Bridge construction over NYS&W and Conrail Tracks
- Close coordination required with Amtrak, NJT, community, private properties, freight railroads, utilities, other contracts
- Poor soil conditions, soft ground, regulated wetlands, Penhorn Creek, tributaries – GDR, GBR, EDR, EBR
- Properties along the NJSA are classified as contaminated/non-hazardous
- Maintain flow in water bodies
- Settlement and vibration
- Instrumentation & Monitoring Program

Retaining Wall

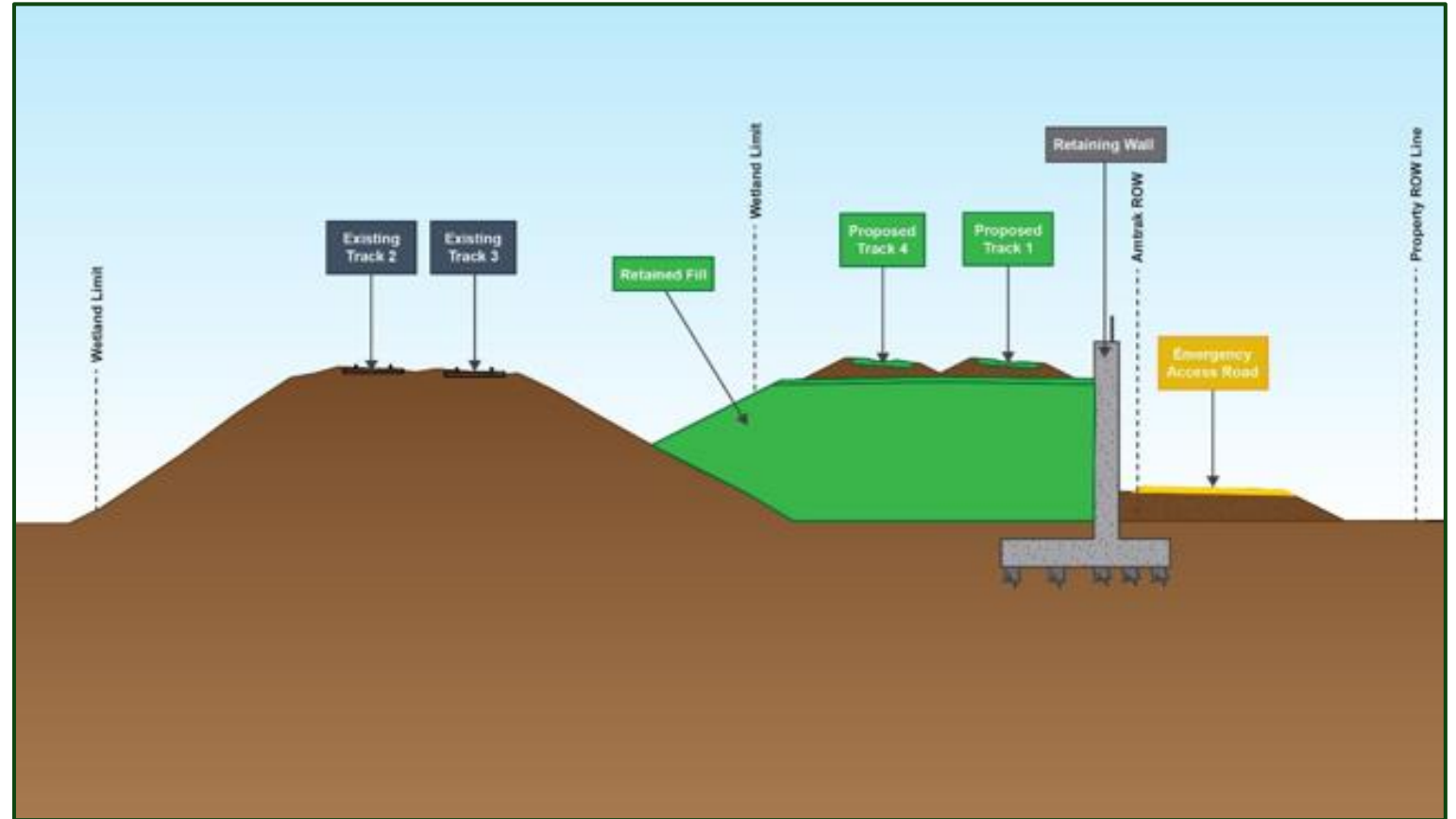
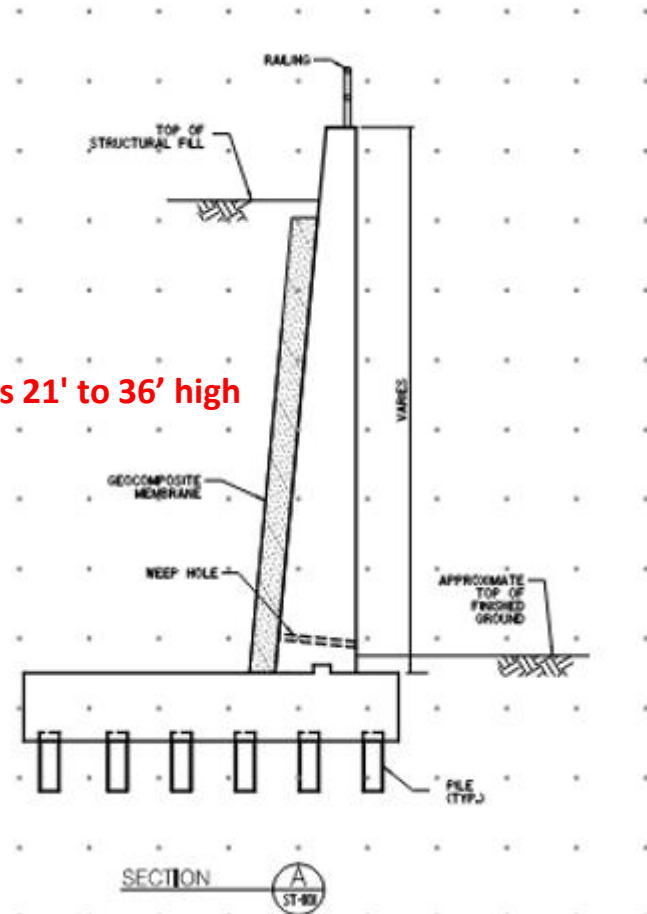


DRAFT – EASEMENTS IN PROCESS

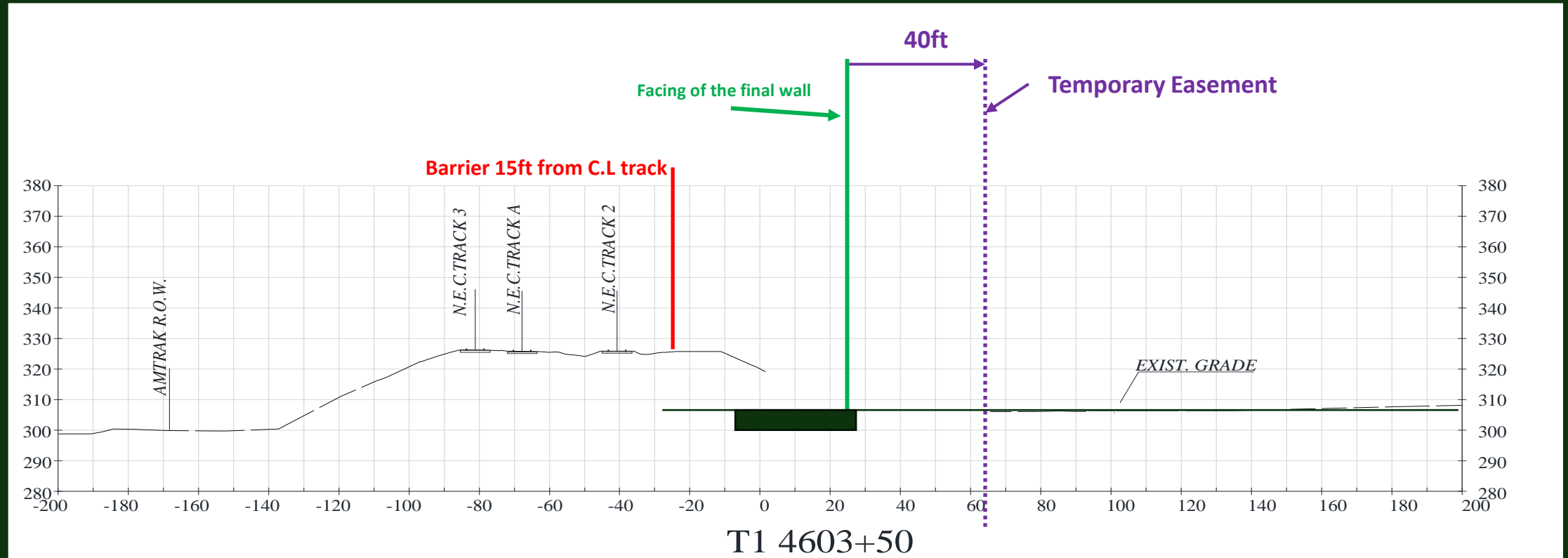
Typical Retaining Wall Section

Indicative Design

Varies 21' to 36' high



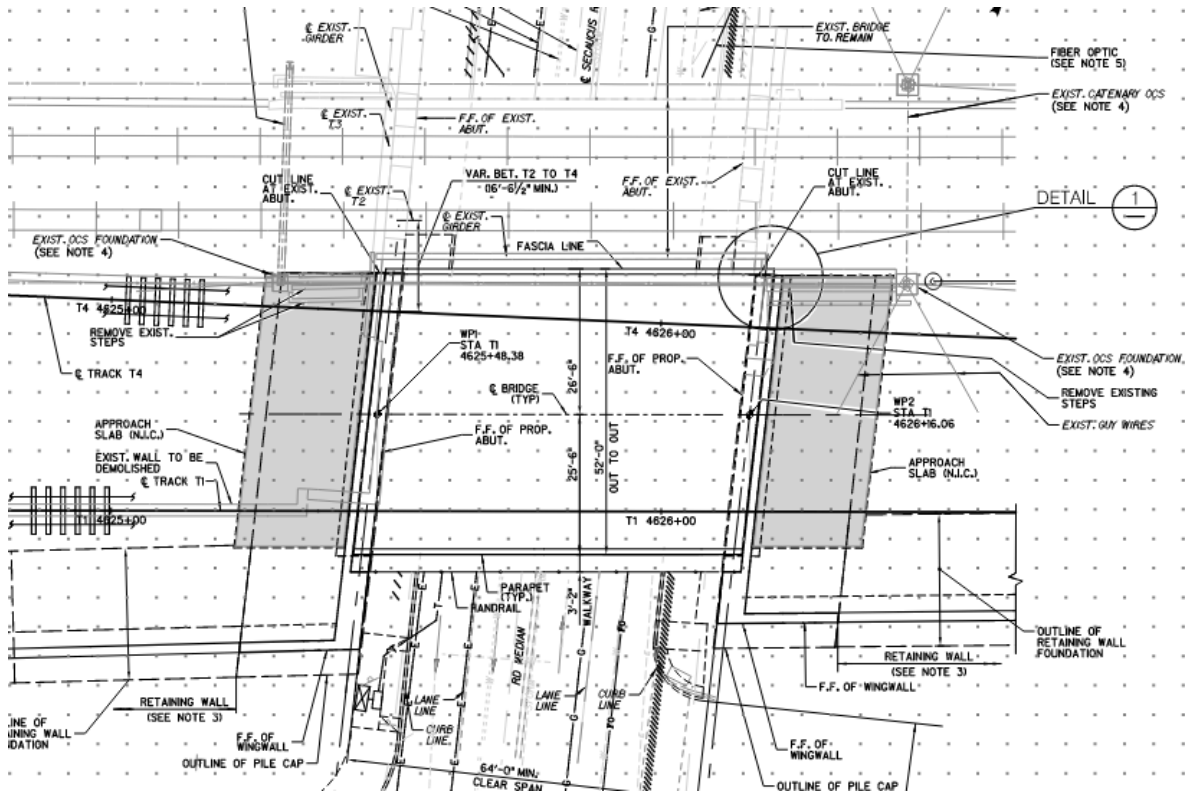
Retaining Wall Typical Section



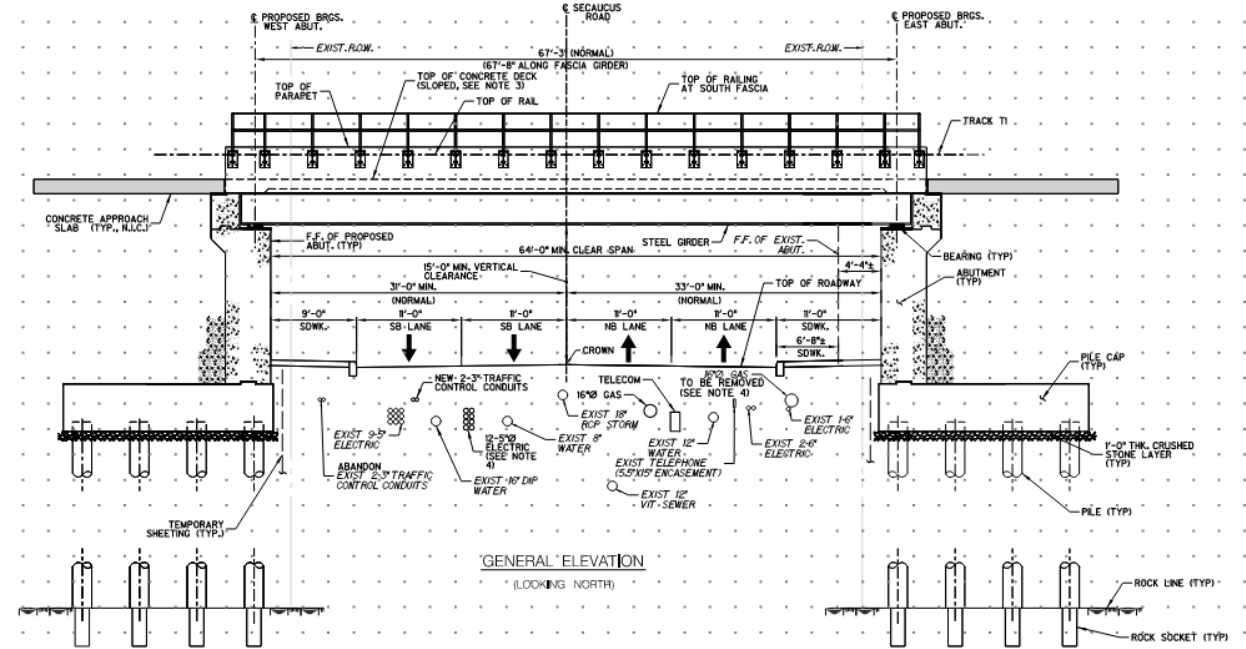
Secaucus Road Bridge

Indicative Design

Plan



Section



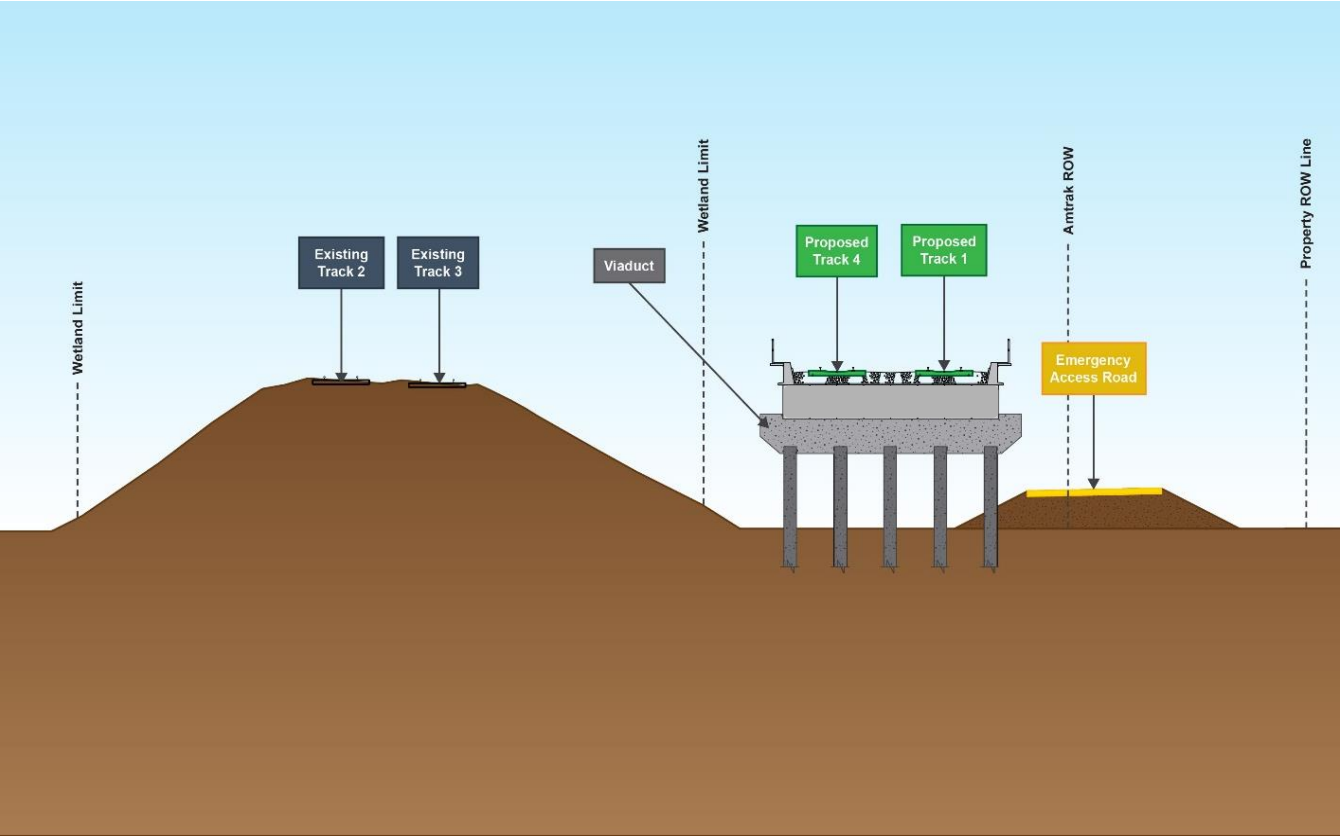
Viaduct



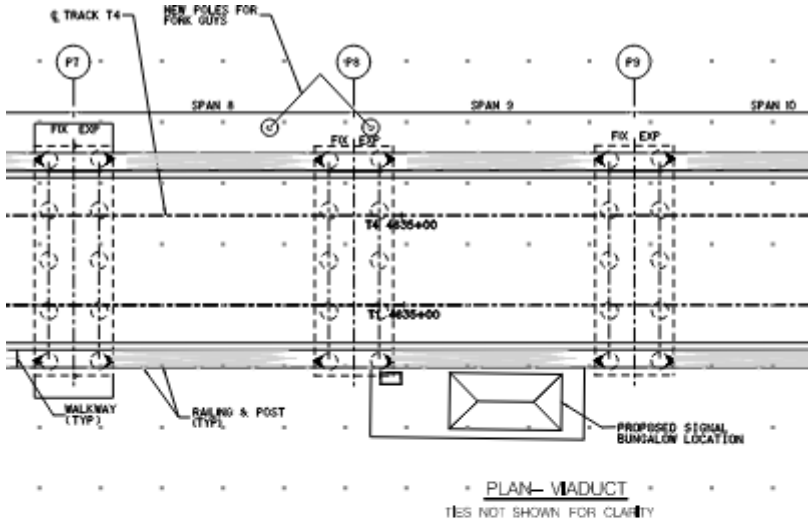
Viaduct Section

Indicative Design

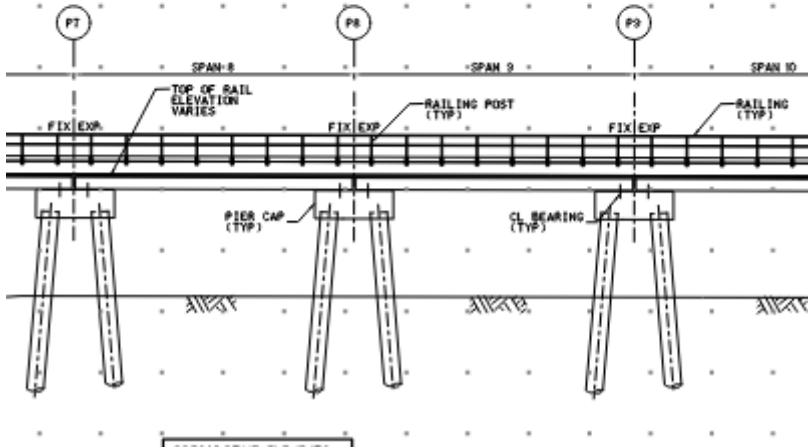
Typical Section



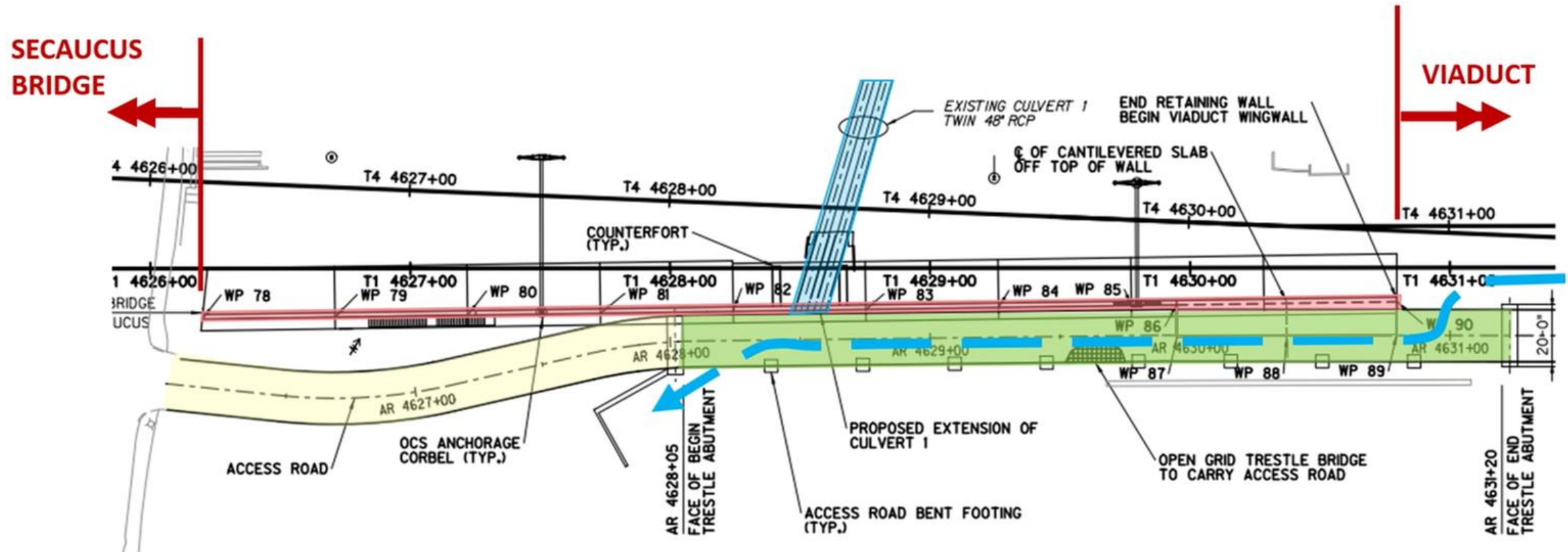
Plan



Elevation

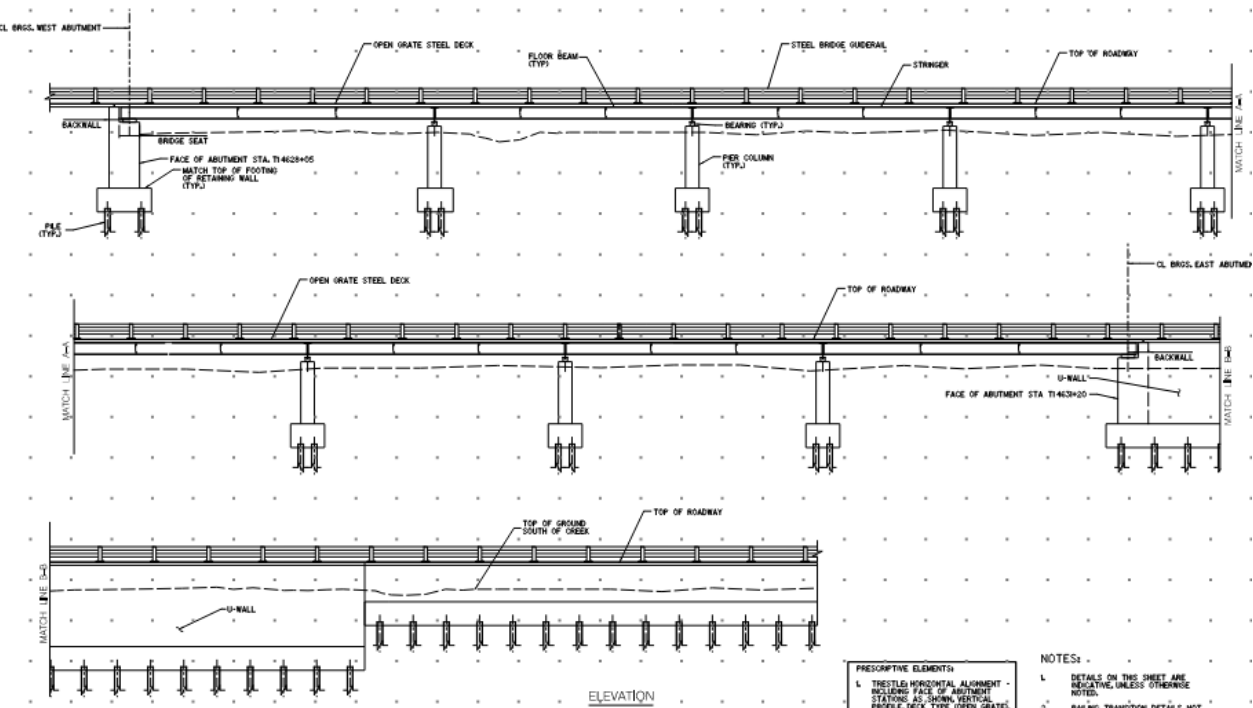


Penhorn Creek – Open Grate Trestle Access Road

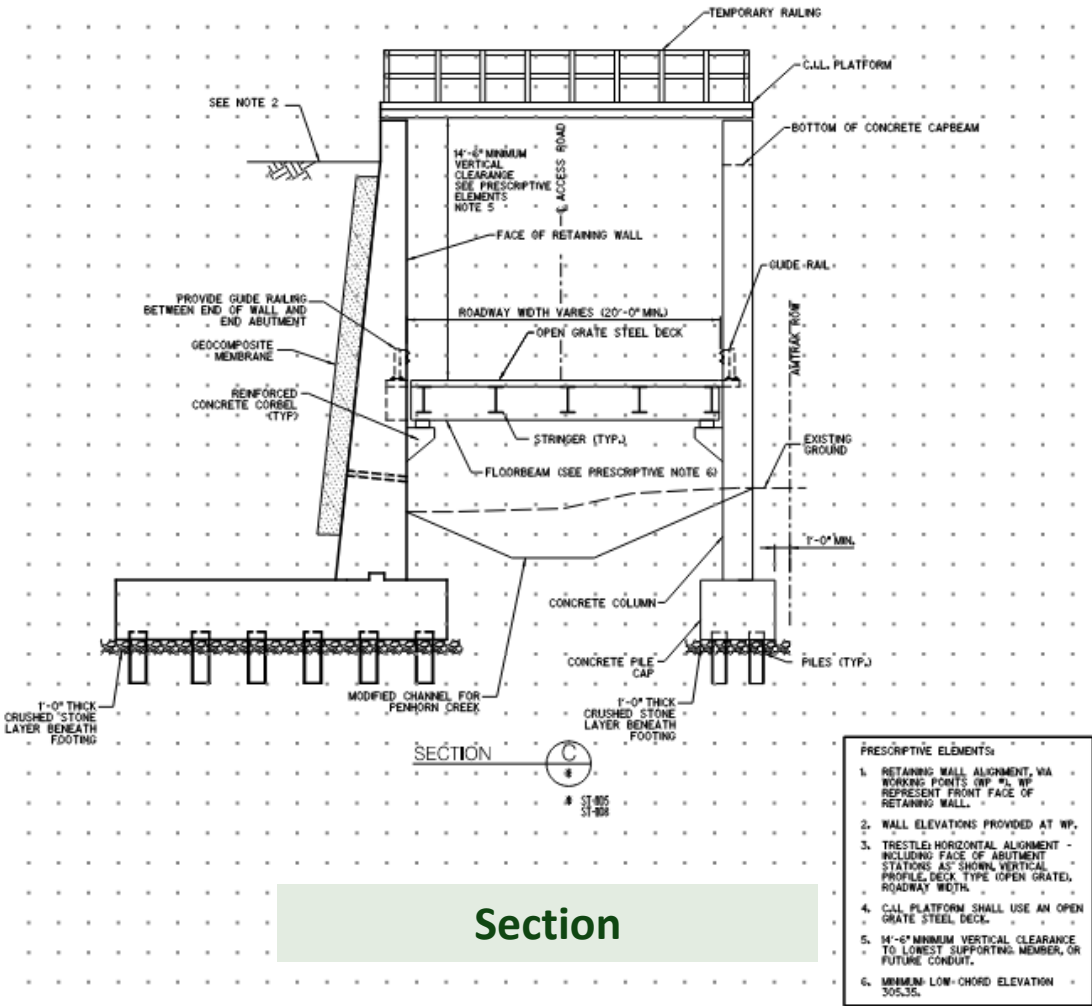


Open Grate Trestle

Indicative Design



Elevation



Section

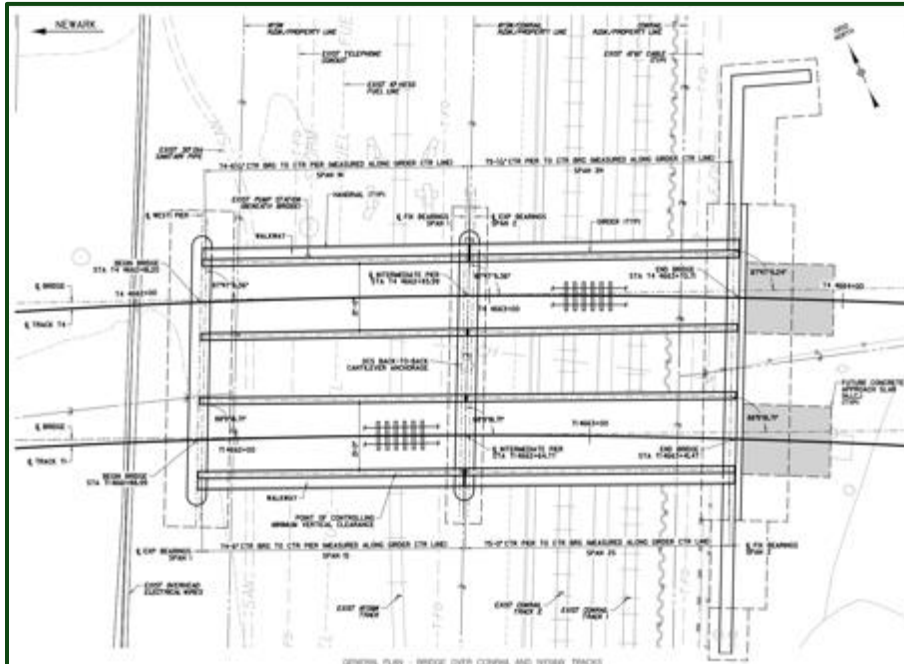
NYS&W/Conrail Bridges



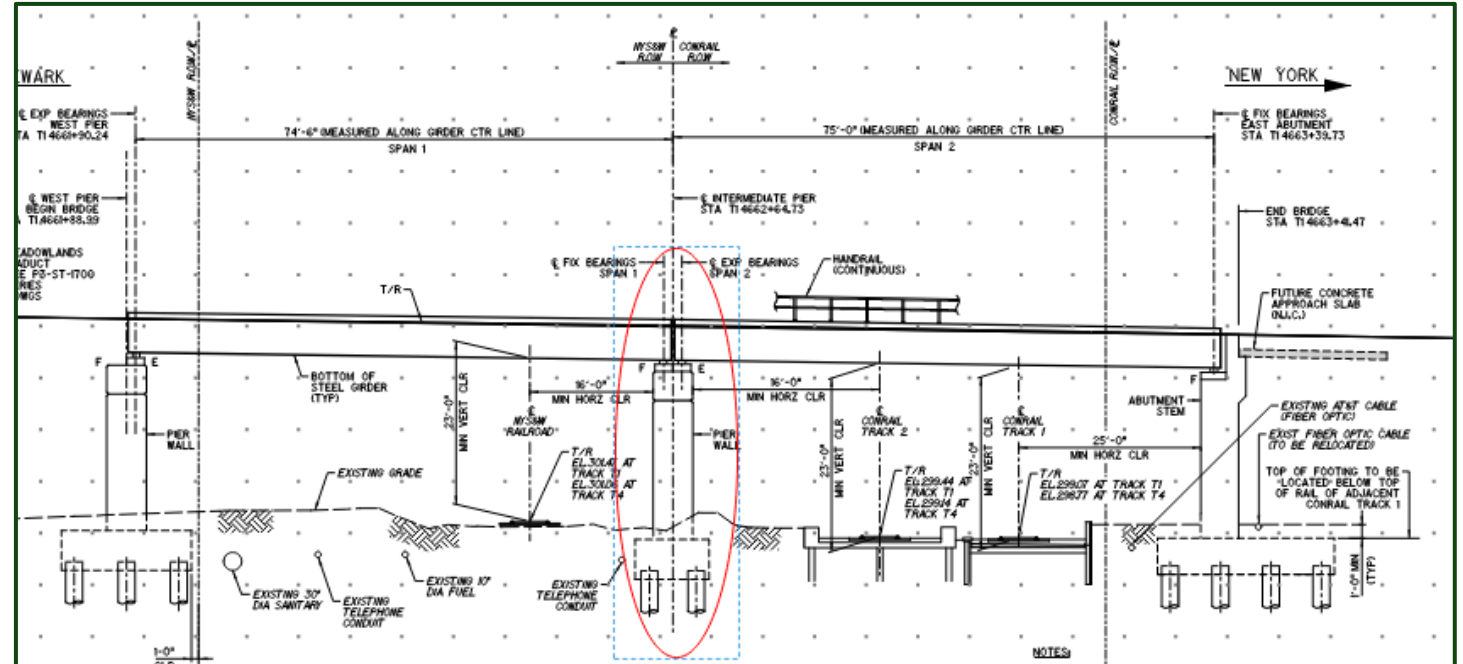
NYS&W/Conrail Bridges

Indicative Design

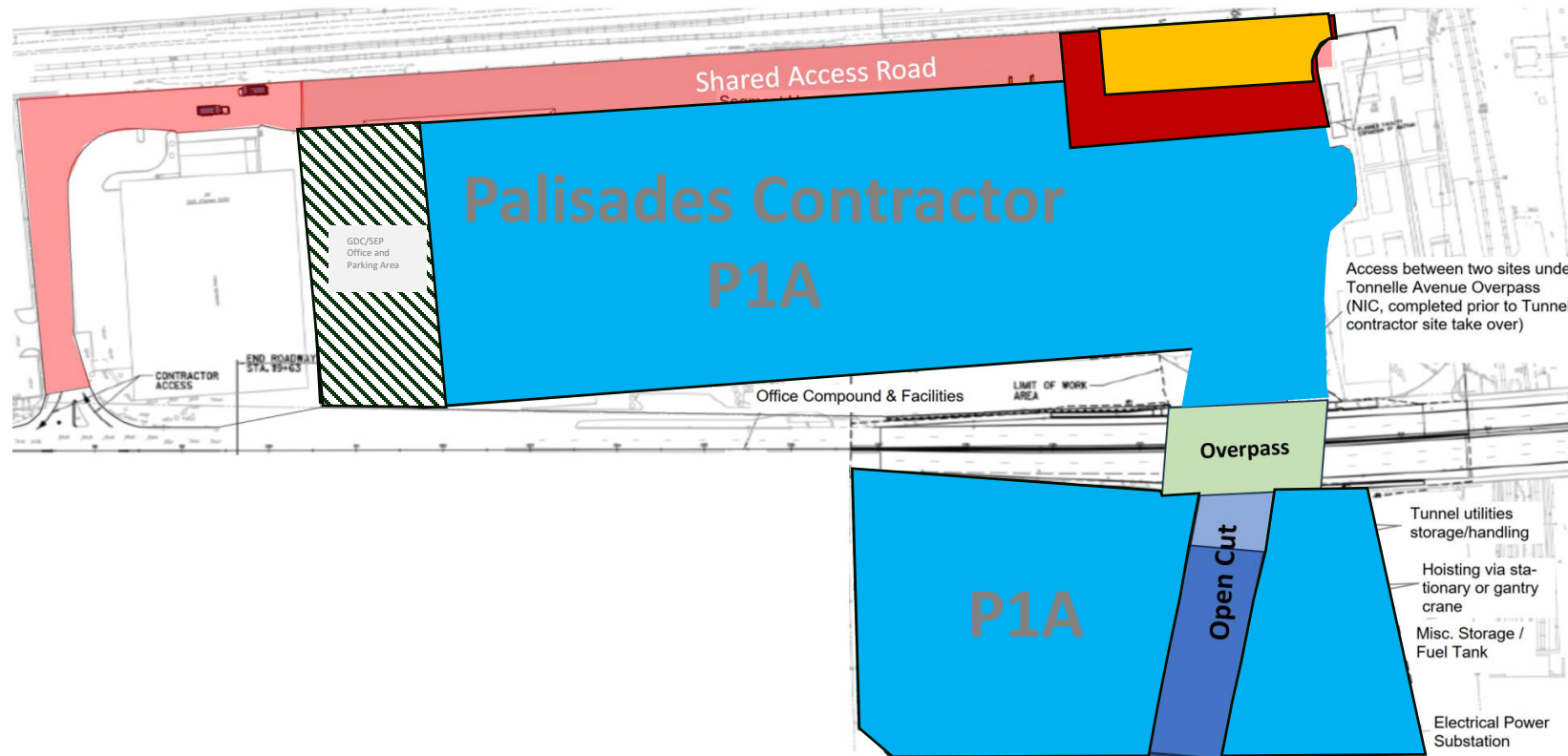
Plan



Elevation



Tonnelle Ave Site Access & Staging



Access
200' x 90'

Construction Area
300' x 100'

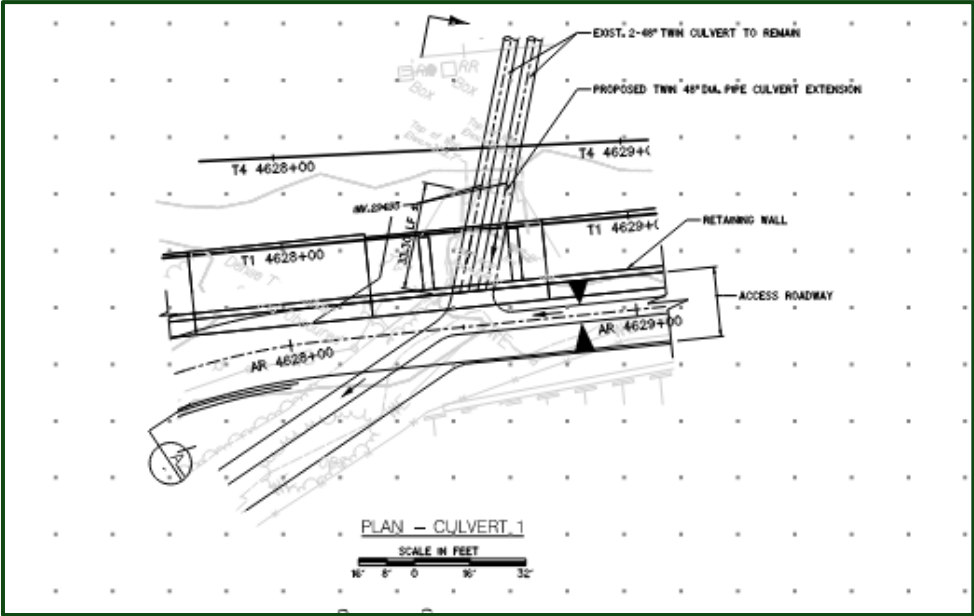
Culvert Extensions

Indicative Design

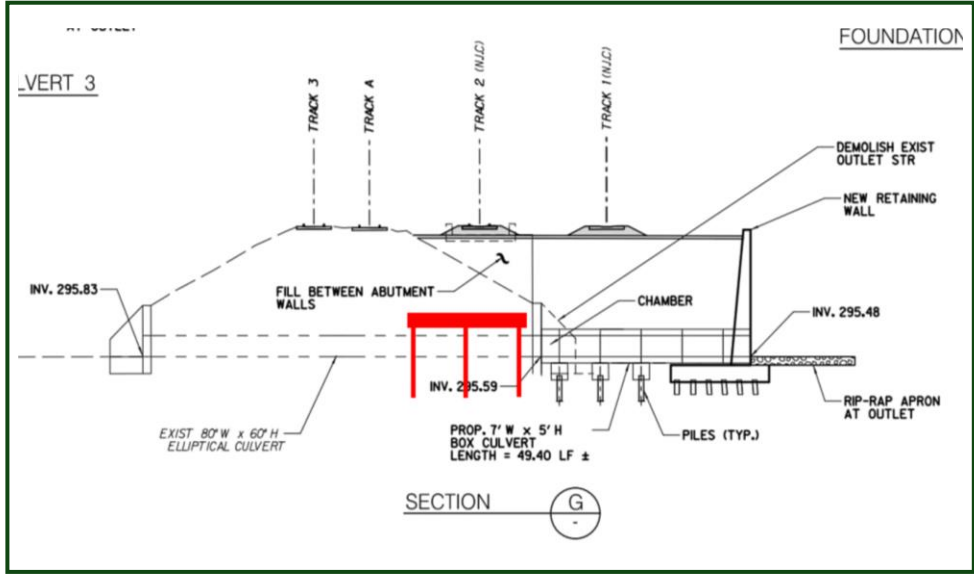


Site Photo Culvert 3

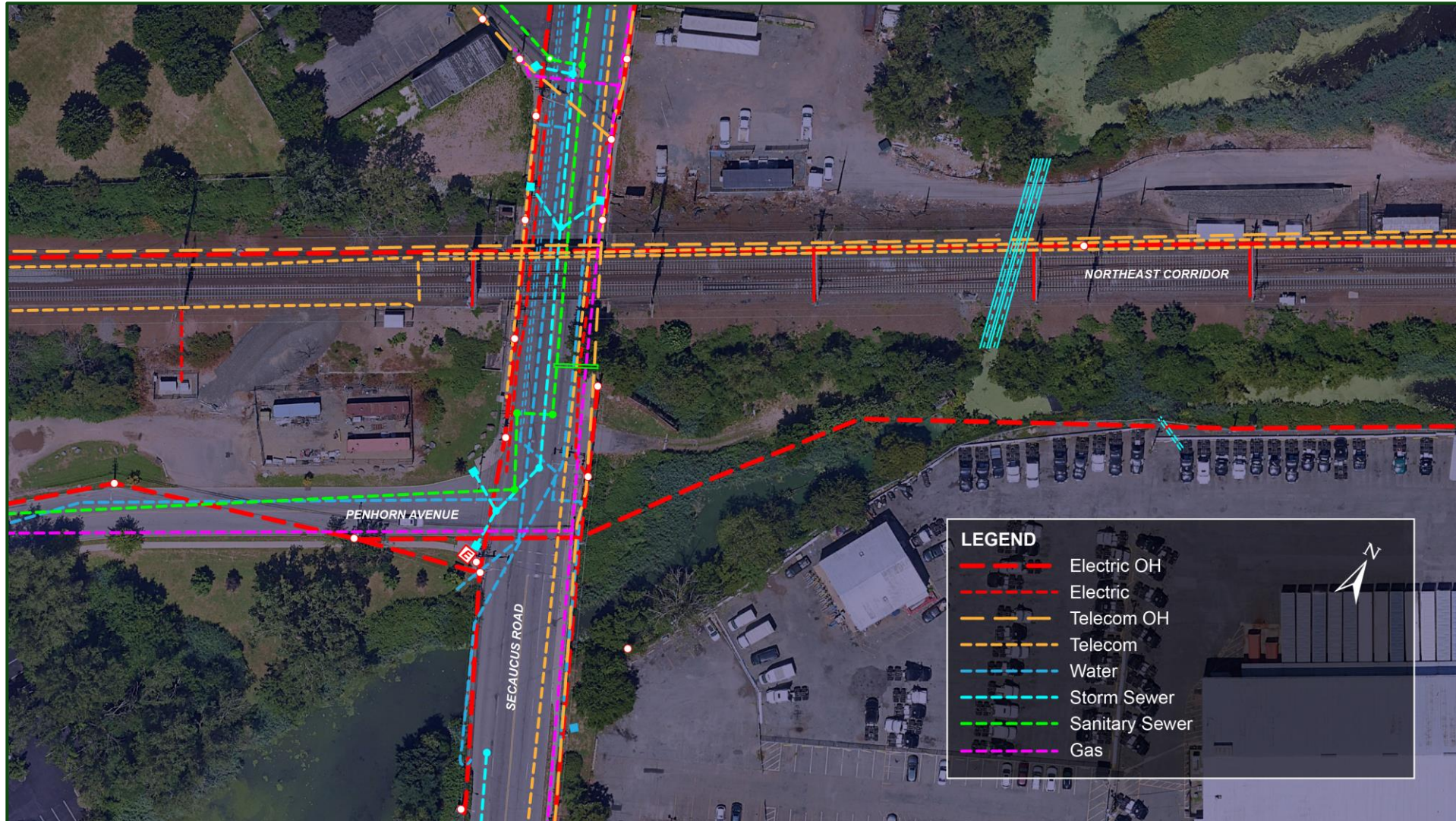
Culvert 1 Plan



Culvert 3 Section with
Relieving Platform



Utility Relocations at Secaucus Road



Utility Relocations: Secaucus Road

Relocate:

- PSE&G overhead Electric into underground ducts
- Verizon, Comcast overhead Telecomm lines into underground ducts
- Utility Pole Work
- PSE&G UG 16" Gas Main
- Hudson County Traffic Control Devices and Cabinet
- Maintain & protect water and sewer

Utility Relocations: Bridge Over NYS&W and Conrail

Relocate:

- OH Power & Comm Lines feeding NYS&W Pump Station
- OH Power & Comm Lines feeding Conrail Pump Station
- PSE&G OH Electric
- Sprint UG Comm (if required)
- UG Sanitary Sewer (if required)

Third-Party Coordination

Utility	Companies (Subject to Change)	
Gas	PSE&G	
Electric	PSE&G	
Water	Veolia and Jersey City Municipal Utilities Authority	
Telecom	Verizon Verizon Business Comcast AT&T, Core Cable AT&T Metro	Zayo Lumen CenturyLink/MCI Lumen/Quest Boldyn/Cross River Fiber
Sanitary Sewer	North Bergen Municipal Utilities Authority	
Traffic Signals & MPT	Hudson County	

Environmental Considerations

Conditions Along the Alignment

- Wetlands
- Penhorn Creek and tributary
- Flood hazard areas
- Groundwater Classification Exception Areas
- Stormwater, supply wells
- Recorded deed notice extents
- Known contaminated sites

Restrictions

- Comply with USACE and NJDEP permit requirements, including restrictions on construction within Penhorn Creek and tributaries between March 1-June 30
- Implement measures that minimize impacts to wetlands near construction activities in the Meadowlands
- Eliminate adverse effects to nearby wells and wetlands by controlling seepage using sheeting or similar methods

Environmental Considerations

Linear Construction Project Oversight as per NJDEP Requirements

- Preparation of a Materials Management Plan (MMP)
- Contaminated soil and groundwater characterization and disposal management
- NJDEP Licensed Site Remediation Professional (LSRP) oversight
- Implementation of Health and Safety Plan including air/noise/vibration monitoring
- Sustainability Plan

Hazardous Materials Management

- Pre-demolition surveys and inspections for impacted concrete, asbestos, lead based paint, PCBs, etc.
- Oversight of demolition debris removal/disposal if needed

Procurement Process

Anthony Gardner, Deputy Chief Administration - Procurement

Procurement Timeline

➤ RFQ Phase

Questions period closes at December 9, 2024, at 2PM

SOQ Submission – January 14, 2025, at 2PM

Shortlist to be Issued – Q1 2025

➤ RFP Phase

One-on-one Meetings

Draft RFP Issuance – Q1 2025

DBE participation goals anticipated to be announced in the RFP stage

➤ Contract Award

Notice to Proceed – Q1 2026

RFQ Elements

➤ Scored Evaluation Criteria

Scored Evaluation Criteria for Technical Submittals	Points
1. Past Performance and Experience	25
2. Key Personnel	30
3. Project Understanding and Approach	30
4. Organization	15
MAXIMUM AVAILABLE POINTS FOR EACH SOQ = 100	

➤ Required Key Personnel

- Project Manager
- Design Manager
- Construction Manager
- Lead Geotechnical Subject Matter Expert (“SME”)
- Lead Structural SME
- Safety Manager
- Lead Hydrology SME
- Lead Coordinator of Railroad Support Services
- Environmental Coordinator
- Geotechnical Instrumentation Engineer

Communication Protocols

- A Procurement Portal has been established for communications and submittals during the procurement process. Respondents must register following the Procurement Portal Registration Instructions provided at www.gatewayprogram.org/procurements.html
- Respondents may submit questions and requests for clarifications regarding this RFQ using the RFQ Question Form, uploaded via the Procurement Portal. Responses and any Addenda provided by the Commission will be released via the Procurement Portal.
- The Commission will utilize the Procurement Portal as the principal means of communication for the procurement of the Project.
- All communications from Respondents or other persons to the Commission regarding the RFQ, including any questions or requests for clarification, must be submitted in writing to the Commission Representatives through the Procurement Portal.



Diversity, Equity & Inclusion

Tracey Mitchell, Senior Advisor, Diversity & Civil Rights

Diversity, Equity and Inclusion at GDC

The Gateway Development Commission is strongly committed to doing business with minority, women-owned, small, and disadvantaged businesses.

Tips for success in achieving and/or exceeding DBE goals:

- Engage **early and negotiate with DBEs** prior to proposals being due.
- Provide **substantive and meaningful opportunities** across the full spectrum of the project and all its phases (design and construction), categories of work, and contracting tiers.
- Develop **contracting package plan commensurate with capacity** of the preponderance of the available pool.
- Establish **transparent processes for qualifying and selecting firms**.
- Conduct **business affairs with DBE partners** in accordance with our Vendor Code of Ethics and USDOT DBE regulations.
- Ensure **prompt payment** is adhered to.

Procurement Packages

GDC's 20.07% proposed Overall DBE goal is based on 7 packages anticipated to be awarded between October 1, 2023, and September 30, 2026.

- Delivery Partner - 20.05%
- Package EA1 – Hudson River Ground Stabilization - 10%
- Package 1A – Palisades Tunnel - 16.7%
- Package 1B – Manhattan Tunnel – 12% (Three Shortlisted Firms)
- Package 1C – Hudson River Tunnel
- Package 2 – Tunnel & Systems Fit-Out
- Package 3 – New Jersey Surface Alignment

Potential Subcontracting Opportunities

- Site clearing and grubbing
- Relocation, replacement, and restoration of existing utilities
- Deep foundation work
- Concrete and rebar work
- Structural steel and bridge erection
- Miscellaneous metals
- Culvert construction
- Environmental monitoring and control
- Temporary support design (SOE)
- Survey controls and independent survey
- Geotechnical instrumentation installation and monitoring
- Condition assessments
- Temporary construction fencing: install & remove
- Cleaning services: offices, change houses
- Cleaning services: portable toilets
- Scheduling
- Project controls
- Safety monitoring
- Inspections
- QA/QC
- Contract administration
- Third party coordination
- GDC outreach support efforts
- Compliance (environmental, DBE, etc.)
- Expediting
- Trucking
- Disposal of material including hazardous materials
- Traffic control
- Surface restoration (paving, trees, fences)
- Cleanup

Q&A

*Please note that answers provided in this sessions are not binding.
Questions should be resubmitted in writing and will be answered via Addenda to the RFQ.*